



ZPeek A Boo Card

LES ATELIERS DE SANDRA

Welcome to this creative tutorial by **Sandra Christel**! Today, we're going to make a **Peek A Boo card** together— a hidden-message card that opens to reveal a surprise. It's an accessible, elegant project that's perfect for any occasion. You can recreate it with supplies you already have at home!


What You'll Need

Essential Supplies

- Plain white paper (standard, not thick)
- **Designer Series Paper** of your choice (e.g., Croque du Jardin, seaside)
- Paper trimmer and ruler
- Multipurpose Liquid Glue and Tear & Tape Adhesive
- Repositionable tape

Embellishments & Decor

- Coordinating Stamp Set and Ink and inks (e.g., Mystérieuse Brume)
- Stamp set with sentiments
- Small embellishments
- Scissors and bone folder for scoring folds

 I recommend using Basic White Cardstock (regular weight) to make two windows at the same time and save time!

Step 1 — Cutting & Folding the Base Pieces

Let's start by preparing the three structural elements of the card. Here are the exact dimensions to cut from your plain white paper:

1

Piece A - the main base

21cm x 10,5cm - Score at 11,5cm.

This forms the body of your card.

2



Piece B — The mechanism

15.5 cm × 10.5 cm — Make a fold at **1 cm** (so at 14.5 cm). This flap will be used to glue the sliding mechanism.

3

Piece C — The Sliding Insert

21.8 cm × 10.5 cm — Make a fold at **7.3 cm**. This is the piece that slides and reveals the hidden message!

  I recommend marking all your folds before cutting the windows — this ensures perfect precision.

Step 2 – Creating the Windows

The windows are what give this card its charm. Here's how to make them cleanly on each piece.

Pieces A and B (white paper)

- Fold the piece in half, pressing the crease firmly
- Cut **1.5 cm** on three sides
- Go up to **7 cm** from the opening edge
- Tip: stack the two pieces and cut both windows at the same time!

Designer Series Paper Pieces

- Cut two pieces measuring **11 cm × 10 cm**
- Stack them and create the windows at the same time
- Frame at **1 cm** on three sides up to **7 cm**
- Result: two perfectly identical frames in one operation

Step 3 — Assembling the Mechanism



Refer to the assembly diagrams at the end of this tutorial

Apply glue to the smaller piece and assemble the two pieces together. Press firmly so the glue sets.



Position the sliding mechanism

Place the piece (fold at 7.3 cm) inside. Glue the 1 cm flap to the return page. Center it well so the card opens and closes easily.



Add repositionable tape

Cut a thin strip of repositionable tape and place it on the sliding edge. This little magical step allows the card to glide smoothly!



Check that it works

Open and close the card several times. If the mechanism catches, press the 1 cm fold flat or add a little repositionable tape to the edges.



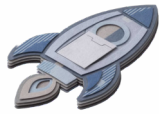
🌟 The complete plan with all dimensions is at the bottom of this tutorial

Step 4 — Finishing & Decoration

This is where the magic really happens! Here's how to dress up your card with decorative paper and embellishments.

Decorate the front Panel

Cut your decorative paper to **14 cm × 10 cm**. Create a window **1 cm** from three sides up to **7 cm**.



Add Your hidden message

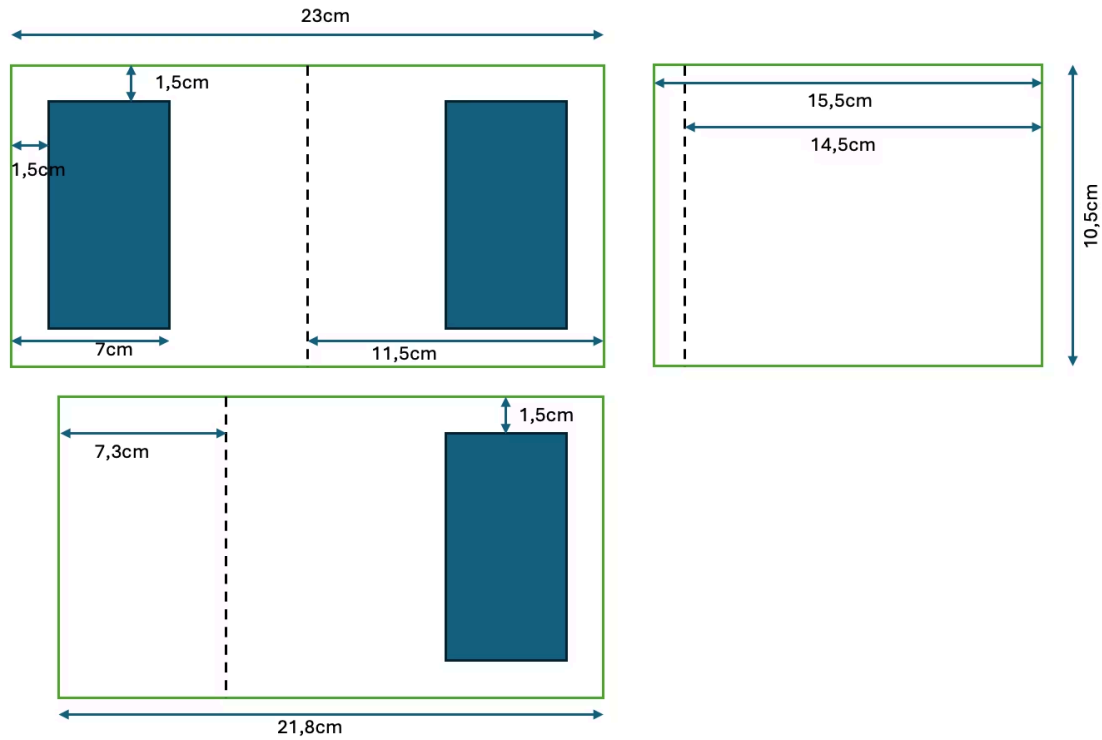
Slide an image or an illustrated card into the mechanism (e.g., a small cabin, a seascape).



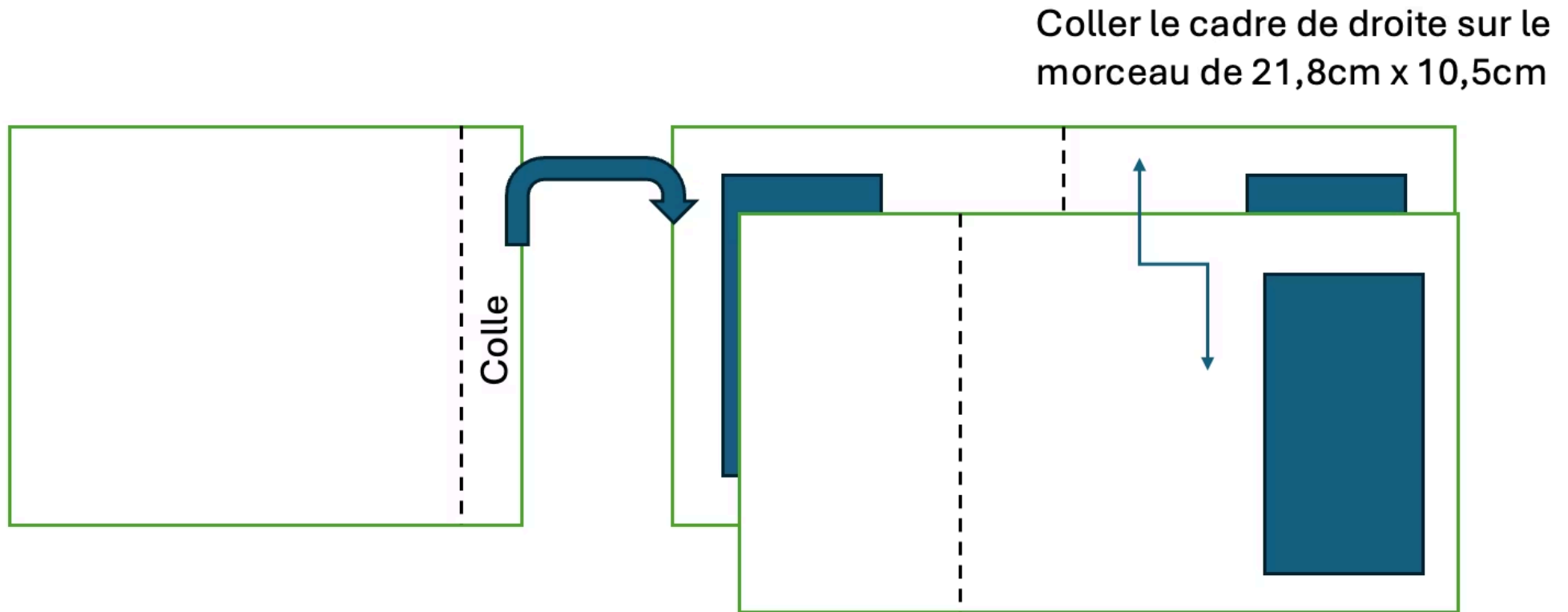
Add the embellishments



Stamp a message with *Mystérieuse Brume* ink. Add small ornaments and paper scraps to personalize it.

Measurements to Follow



Assembly Diagram



  I recommend printing this tutorial and slipping it into your project notebook. The full PDF tutorial will be available on Sandra's Workshops Facebook page if you lose this one!